

# LAND

## FOR SALE

### SİLİVRİ BEYCİLER

## 12.997 m<sup>2</sup>

**OTTO34**<sup>®</sup>  
Gayrimenkul

### Information about the location and transportation of the land;

- 1,8 km to Çerkezköy highway gates
- 77 km from Istanbul New Airport
- 30 km from Tekirdağ Corlu Airport
- 18 km from Beaches of Semizkum
- 13 km from Çerkezköy Train Station

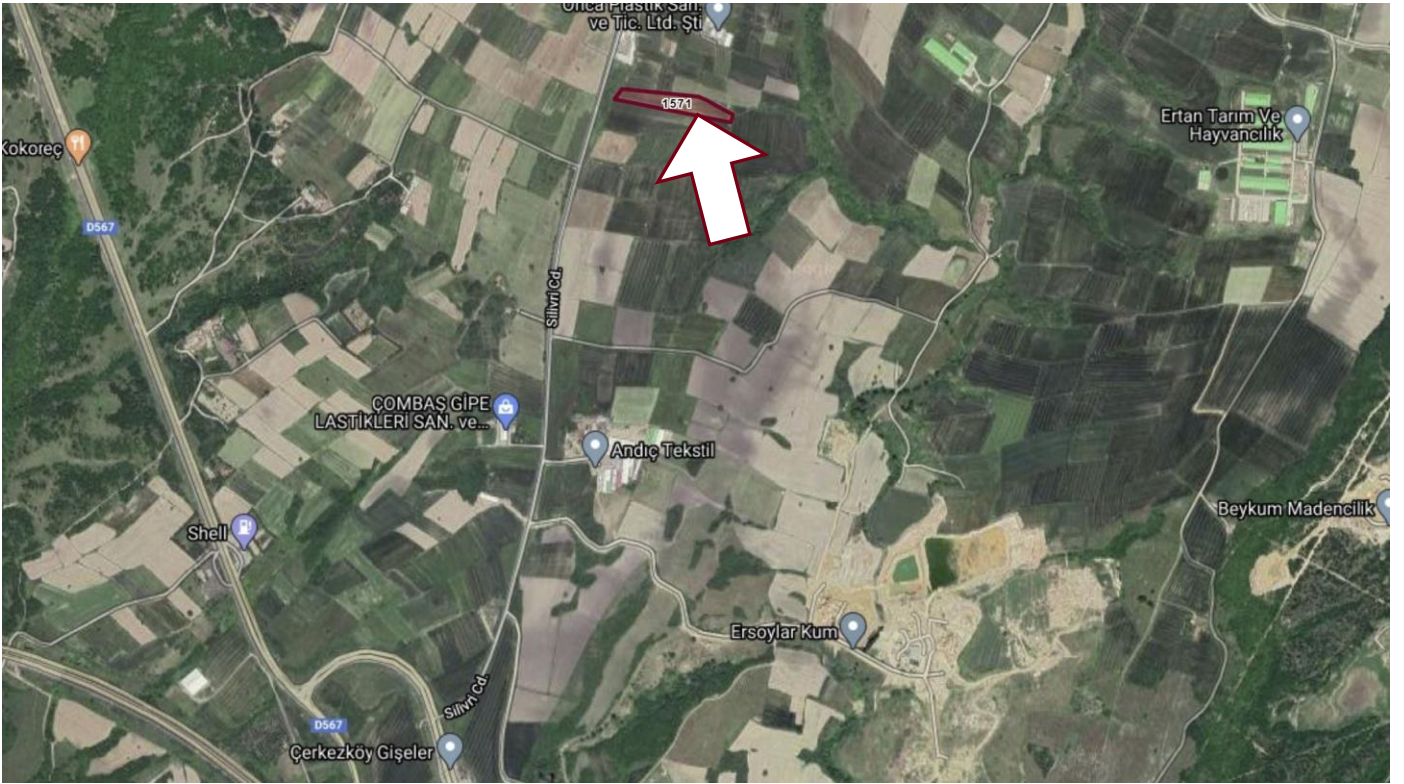
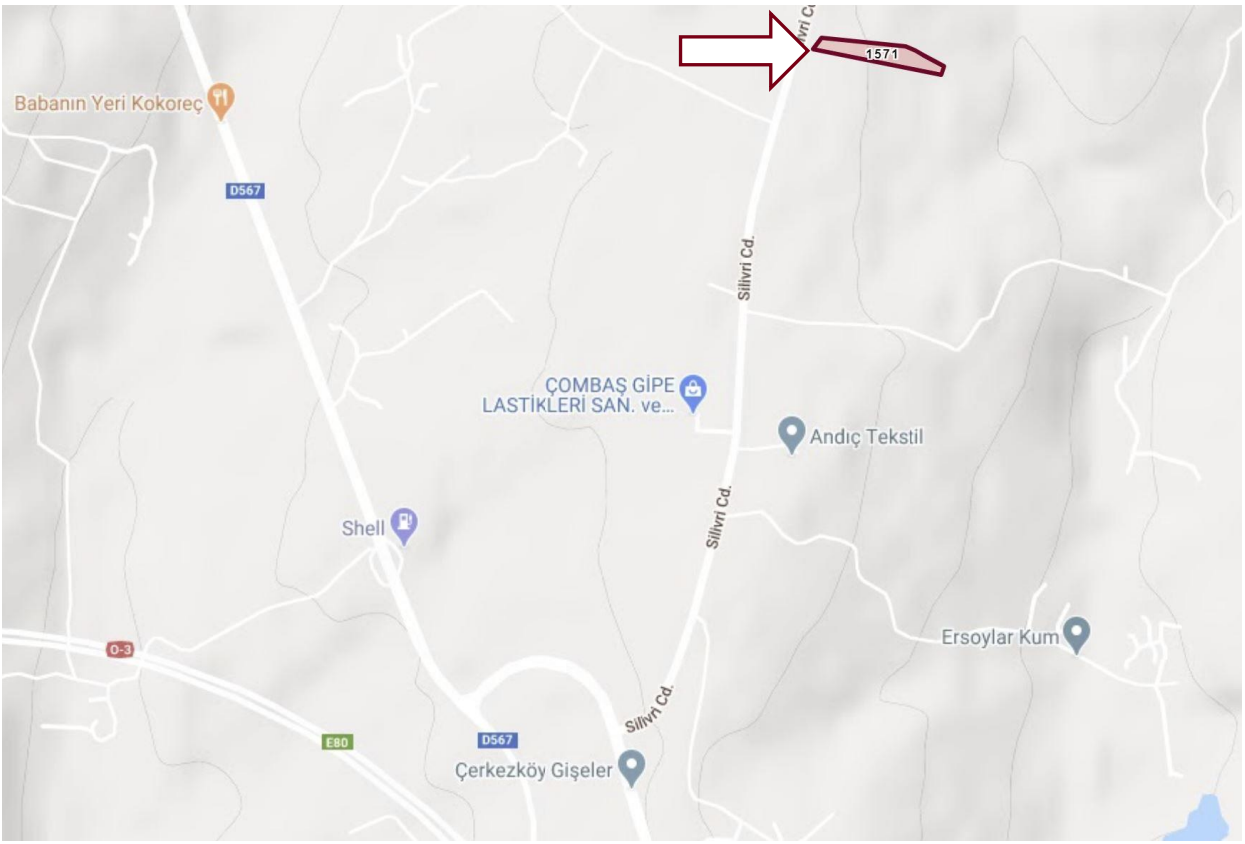
The area where the land is located has a very high productivity potential.

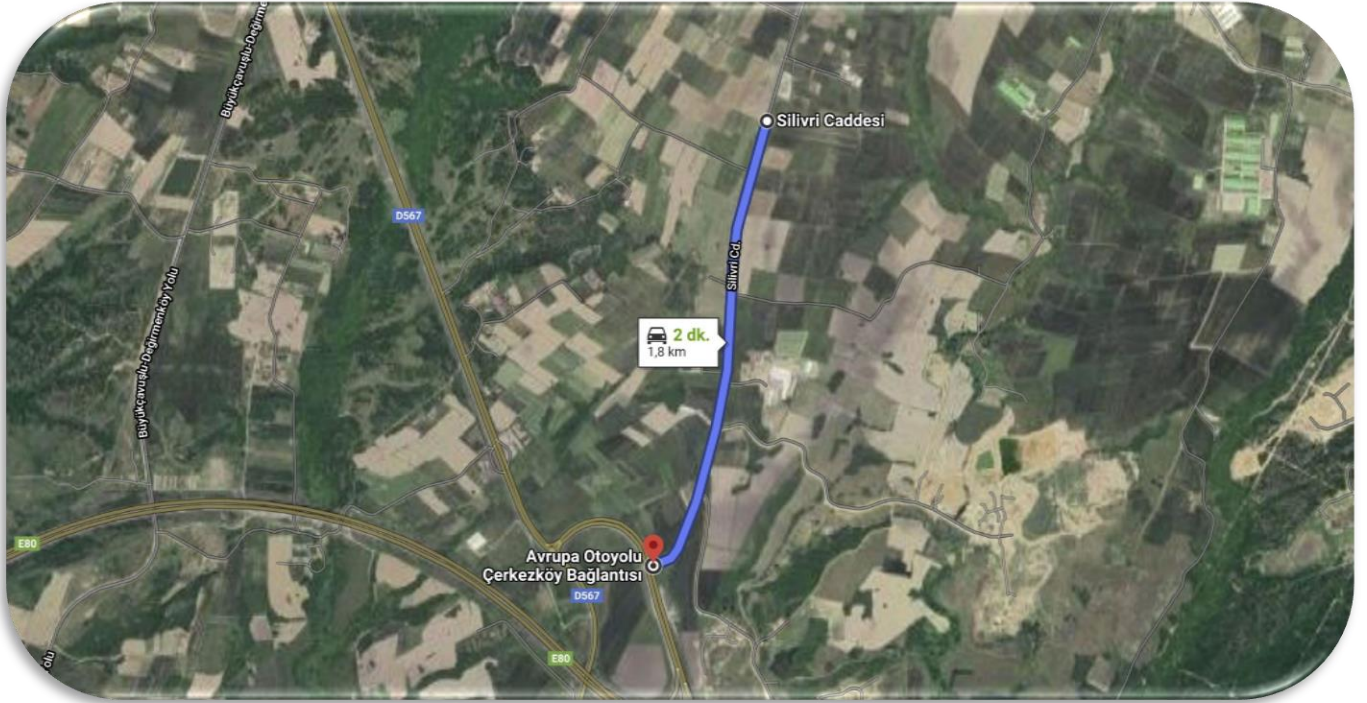
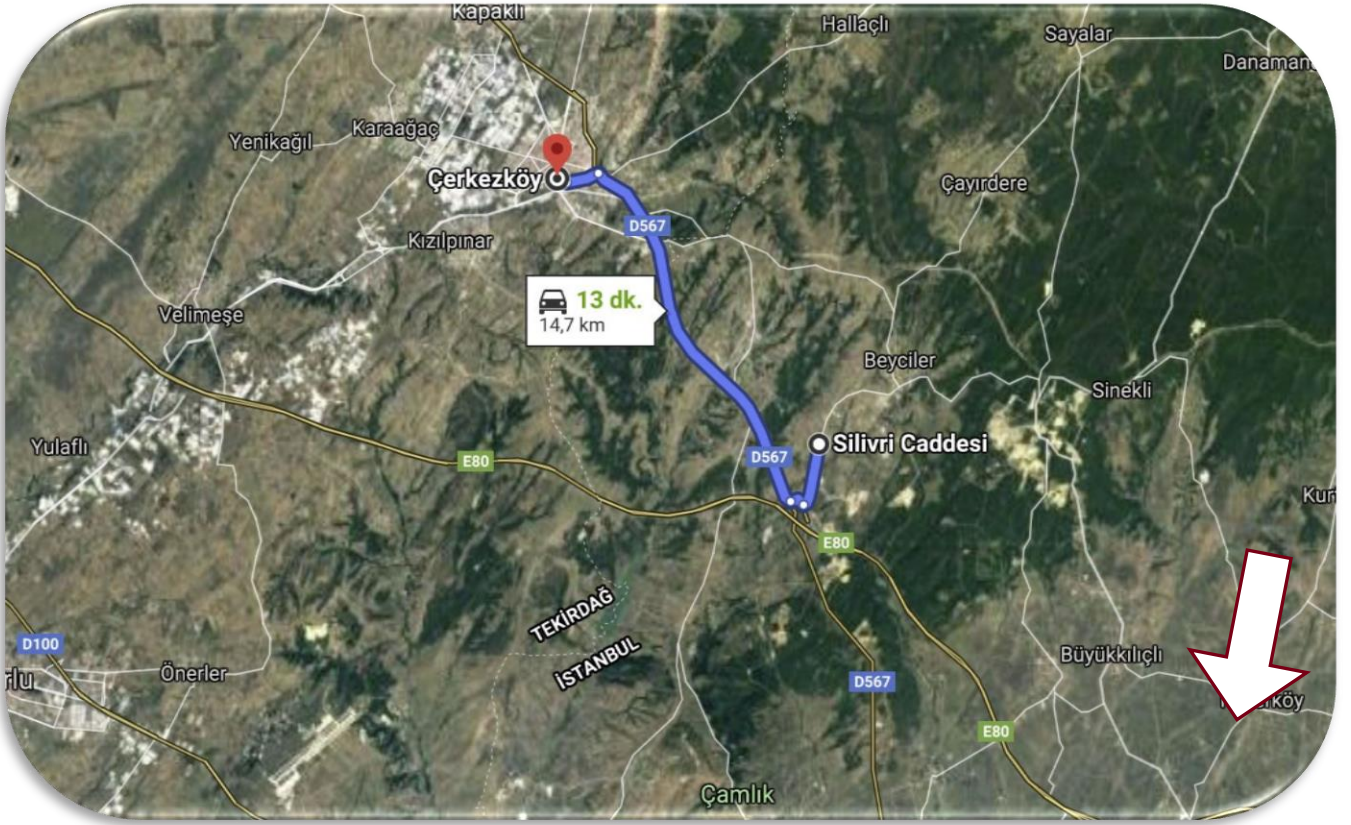
There are many production facilities Plastic, Textile Rubber, Sand etc. Agriculture, Food, Meat, Egg and Milk Products producing facilities are neighboring around.

It is an opportunity to continue to rise in recent years with high investment value as well as suitability for use, The green area between the road and the field is the cadastral road.

**OTTO34**<sup>®</sup>  
Gayrimenkul









### Öznitelik Bilgisi

Taşınmaz No	23202555
İl	İstanbul
İlçe	Silivri
Mahalle/Köy	Beyciler
Ada	
Parsel	1571
Tapu Alanı	12.997,40
Nitelik	Tarla
Mevkii	Hasan ağanın saplığı
Zemin Tip	Ana Taşınmaz
fta	13